



# Oregon Joint Use Violation Examples

Standards Subcommittee

# Utility Operator Basics

- Climbing Space
- Grounding/Bonding
- Permitting
- Clearances
- Structural Strength: Guying, holes, loading calculations
- Tree Trimming

- Climbable
- 8' Clear Zone

Power Space

Secondary/Primary Neutral

40"

Worker Safety Clearance Zone

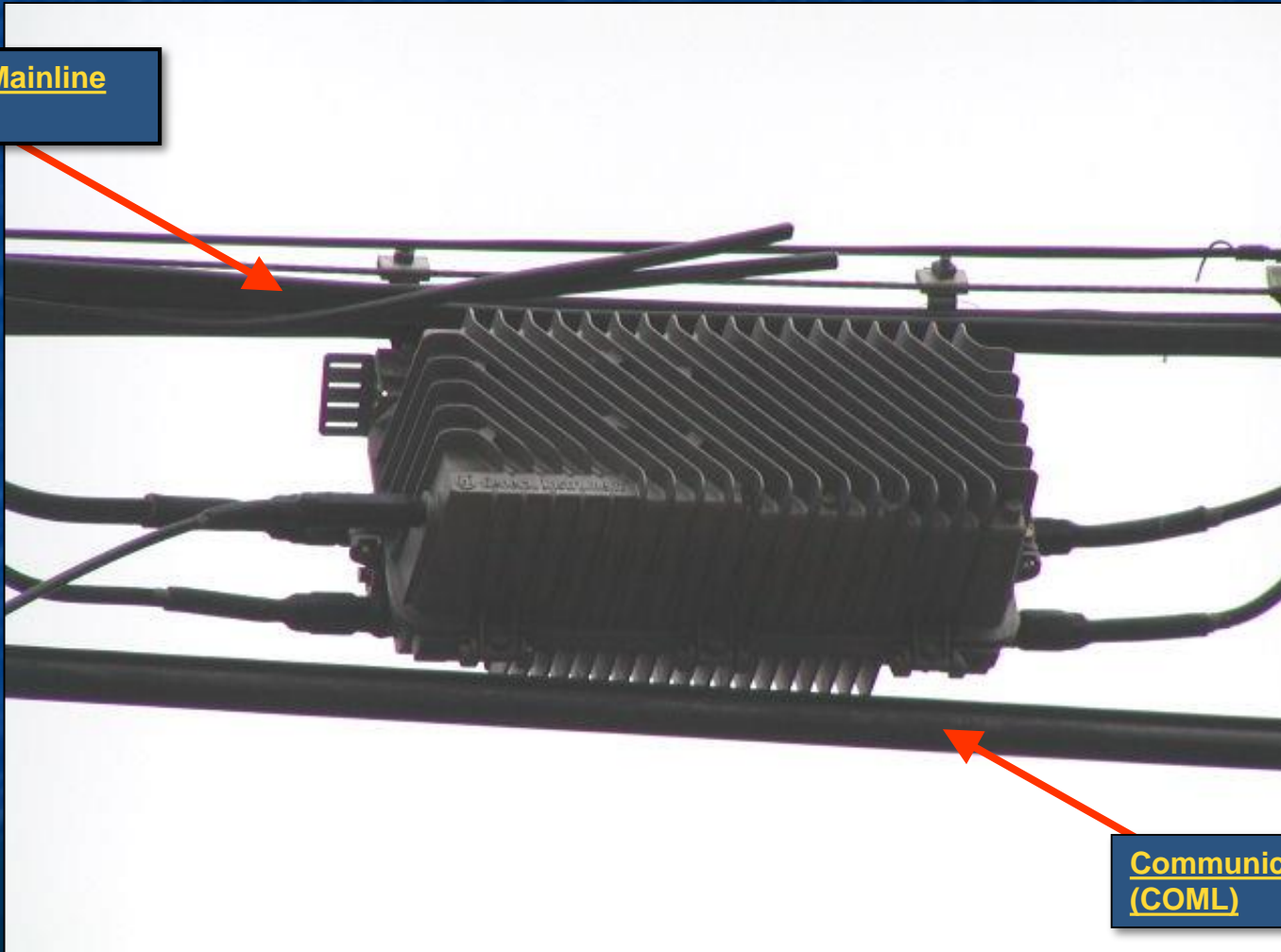
Communication Space

Public Safety Clearance Zone

### Violations

U.C.	Dev.	Equip. 1	Equip. 2	Toward	Suggested Action	SEV.	NESC Reference
C000	MV	COML	COML	P4321	Raise CATV	B	235H2

**Communication Mainline  
(COML)**



**Communication Mainline  
(COML)**

### Violations

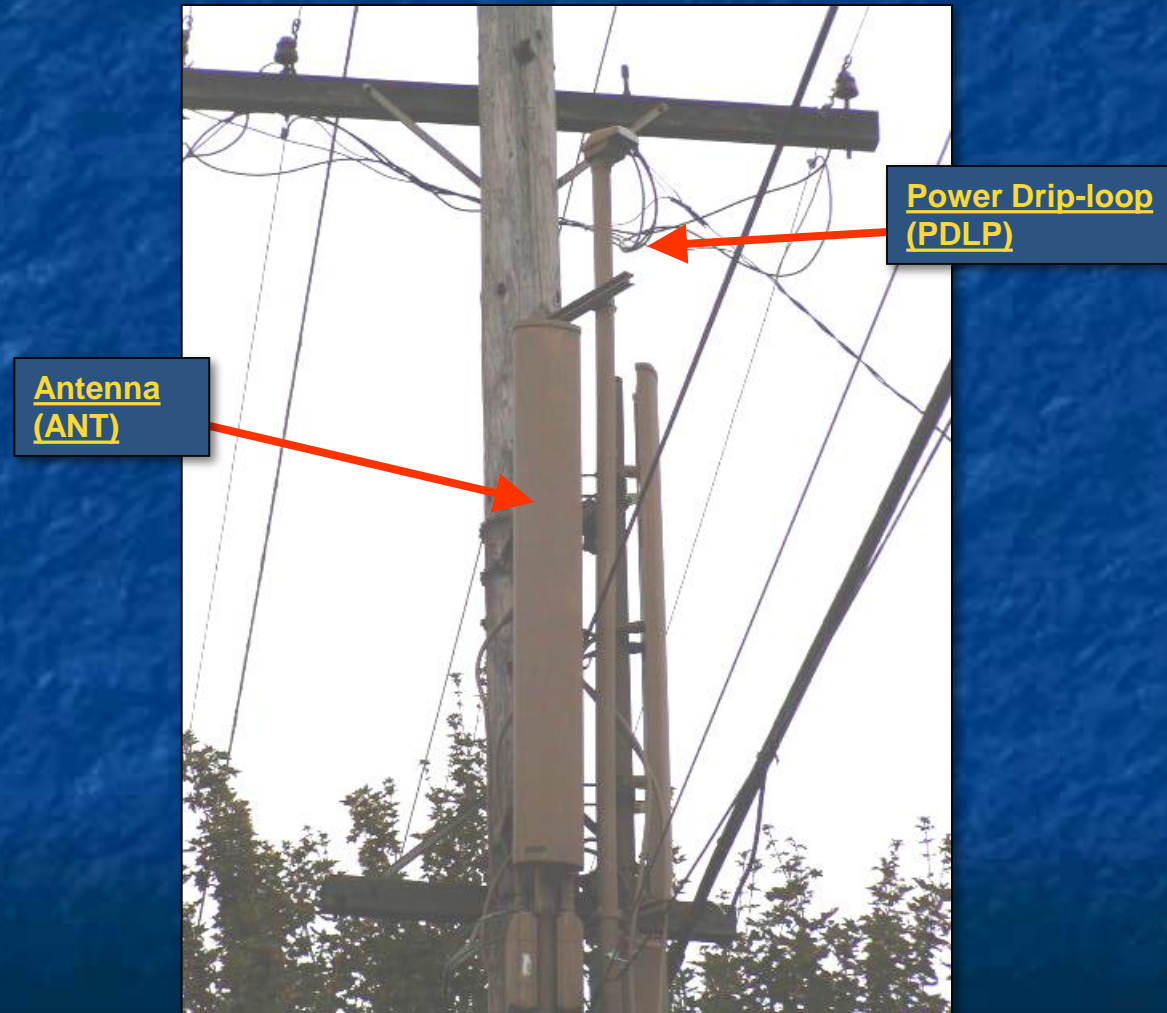
U.C.	Dev.	Equip. 1	Equip. 2	Toward	Suggested Action	SEV.	NESC Reference
X000	PC	WEO			Relocate/Move	B	236



**Wireless Equipment  
(WEO)**

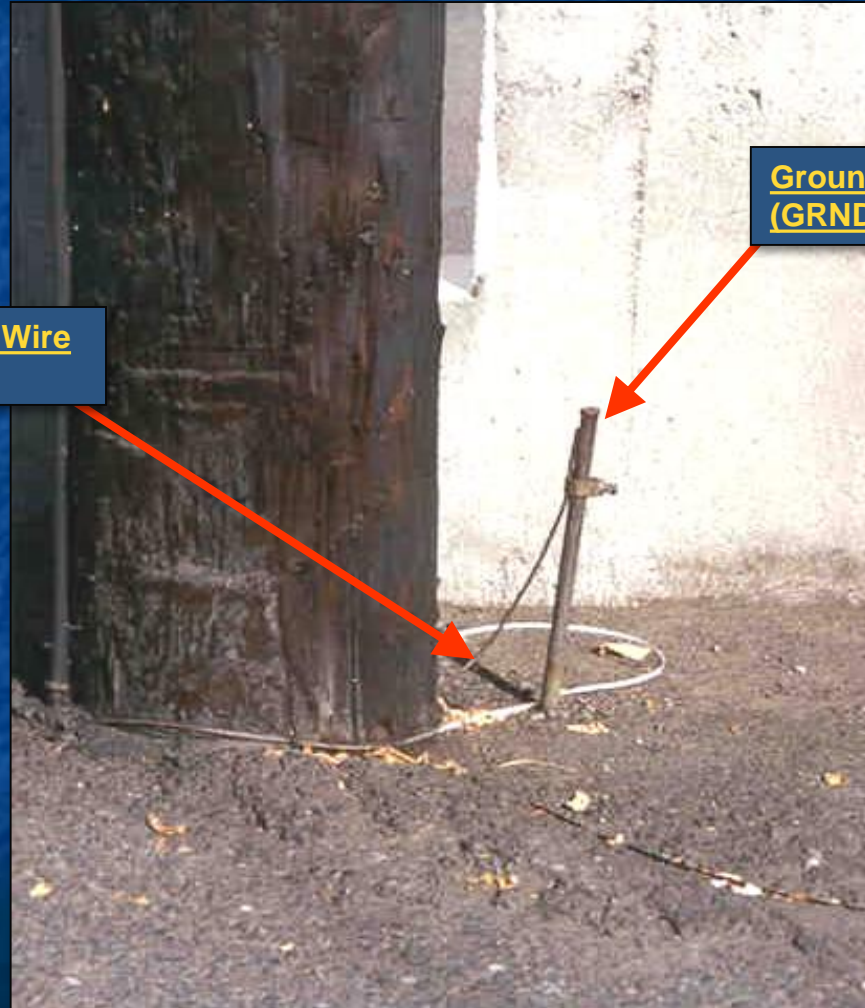
## Violations

U.C.	Dev.	Equip. 1	Equip. 2	Toward	Suggested Action	SEV.	NESC Reference
X000	PV	ANT	PDLP		Lower	B	235



### Violations

U.C.	Dev.	Equip. 1	Equip. 2	Toward	Suggested Action	SEV.	NESC Reference
P000	PG	GRND	PEDS		Lower	B	94B2c



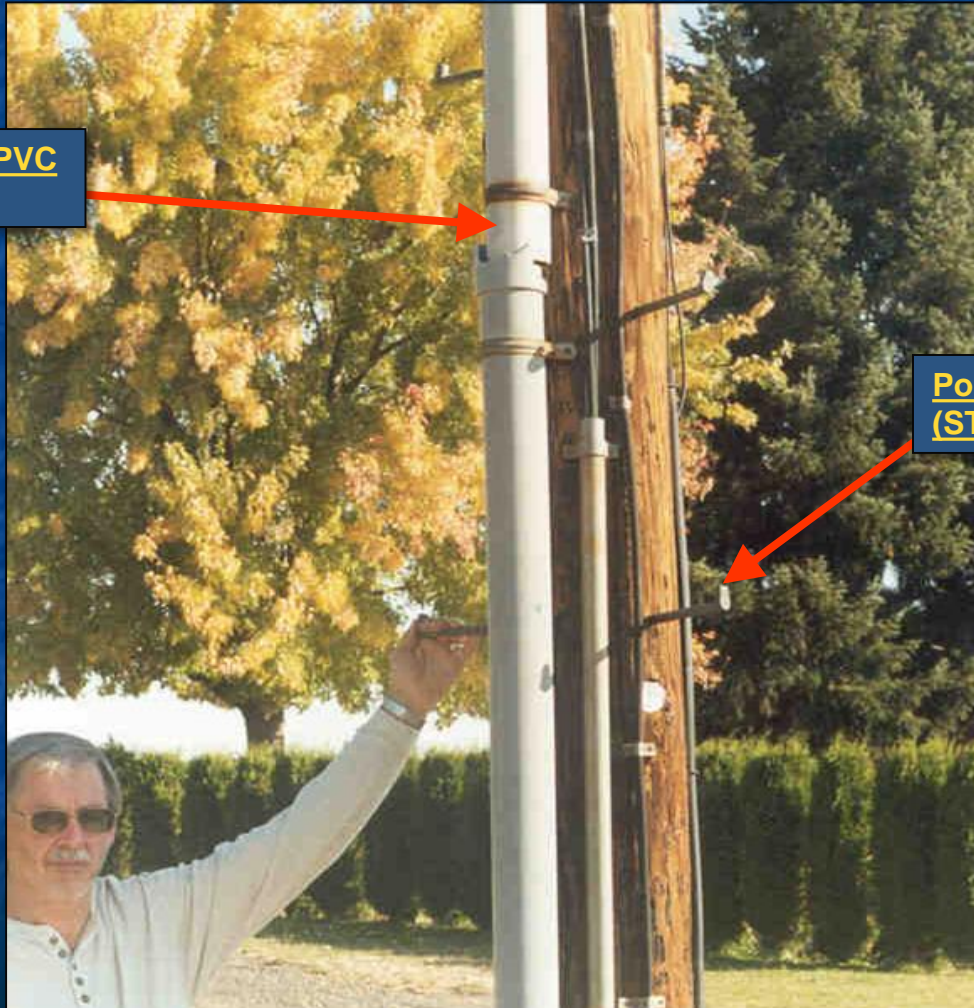
Ground Wire (GRWR)

Ground Rod (GRND)

## Violations

U.C.	Dev.	Equip. 1	Equip. 2	Toward	Suggested Action	SEV.	NESC Reference
T000	PV	STEP	PEDS		Remove	B	217A2b
P000	DB	CON			Repair	B	360A

Conduit-PVC  
(CON)



Pole Step  
(STEP)

### Violations

U.C.	Dev.	Equip. 1	Equip. 2	Toward	Suggested Action	SEV.	NESC Reference
P000	PV	SOB	PEDS		Raise	B	217A2c

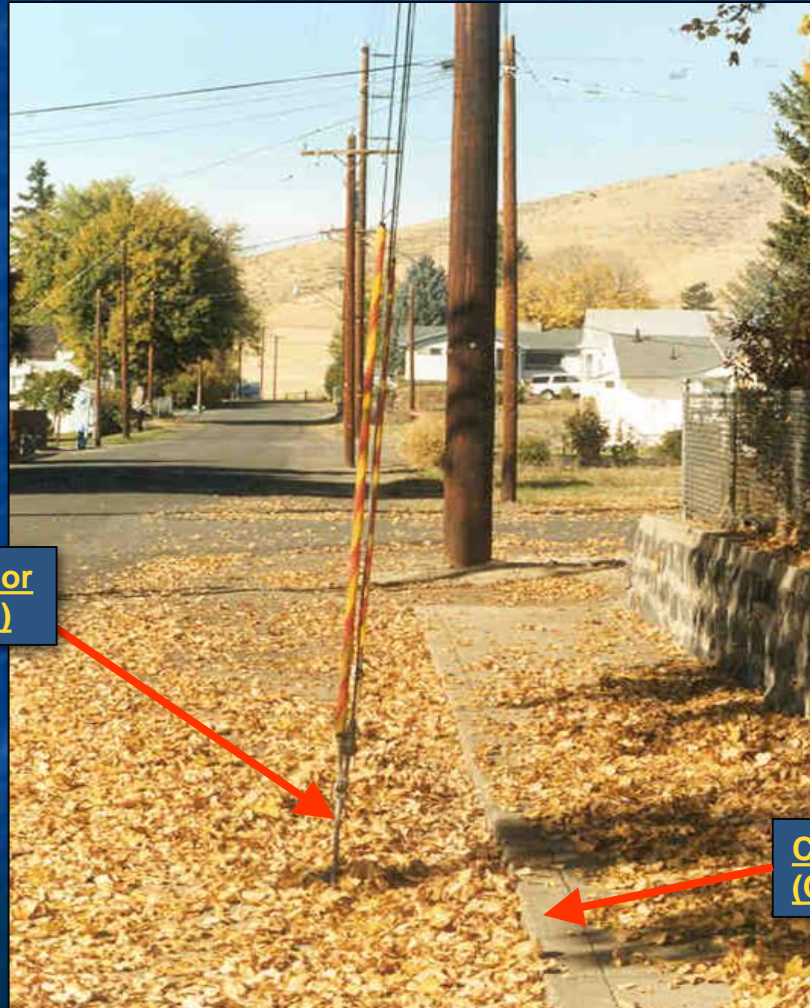


**Stand Off Bracket  
(SOB)**

**Pedestrian Surface  
(PEDS)**

### Violations

U.C.	Dev.	Equip. 1	Equip. 2	Toward	Suggested Action	SEV.	NESC Reference
P000	PS	ANC	CURB		Relocate/Move	B	231B1

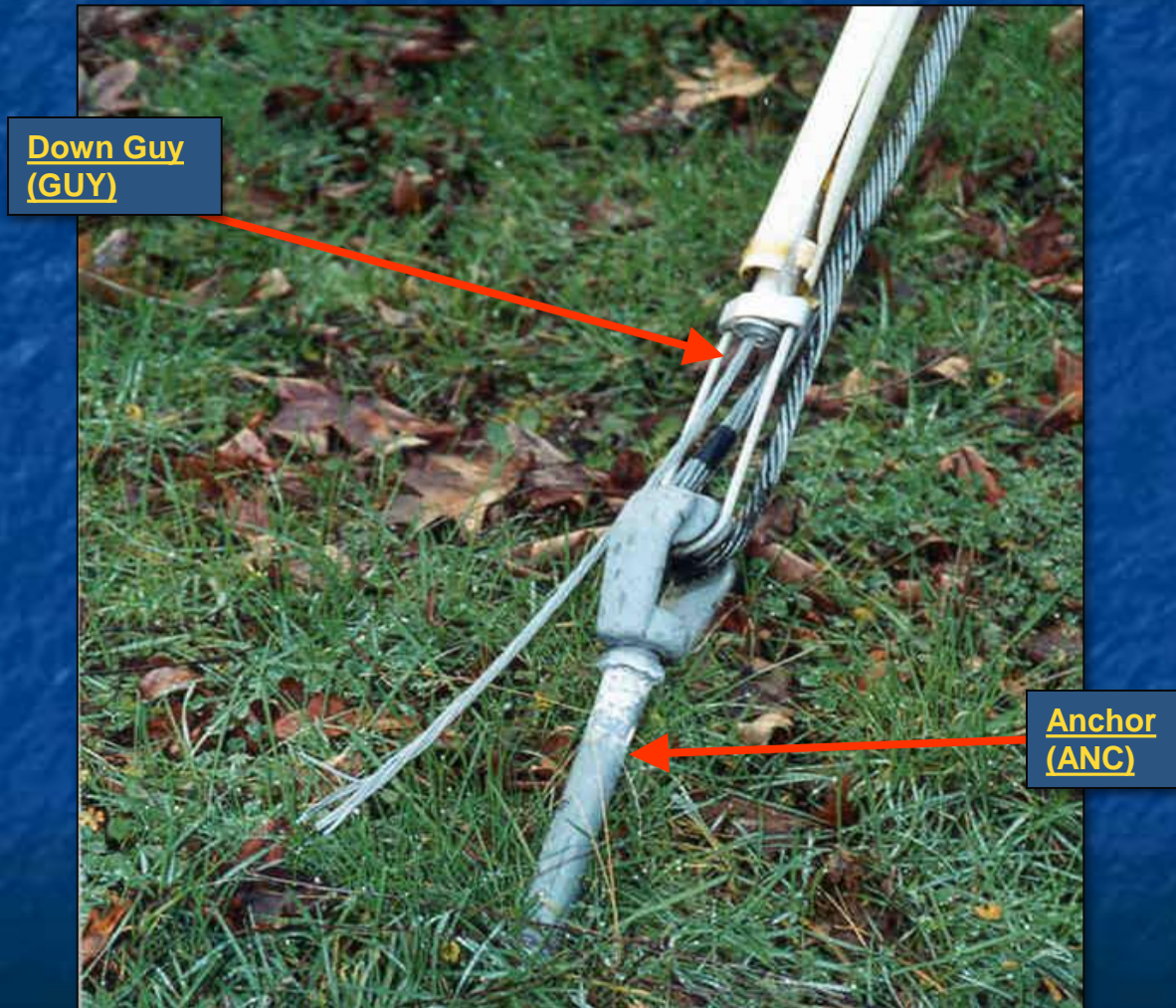


Anchor  
(ANC)

Curb  
(CURB)

## Violations

U.C.	Dev.	Equip. 1	Equip. 2	Toward	Suggested Action	SEV.	NESC Reference
C000	PS	GUY	ANC		Trim	B	012C



## Violations

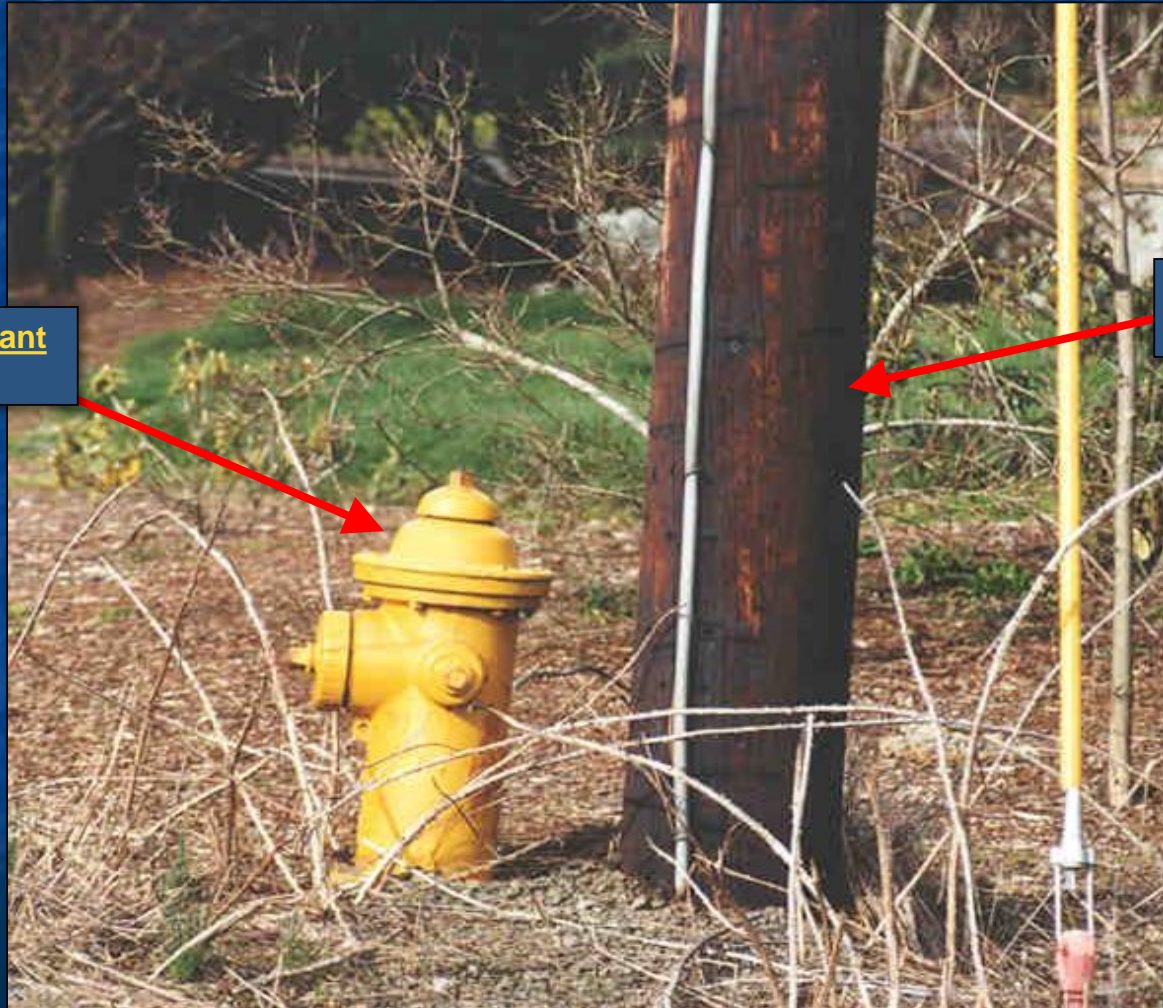
U.C.	Dev.	Equip. 1	Equip. 2	Toward	Suggested Action	SEV.	NESC Reference
C000	AB	COMD			Remove	B	214B

**Communication Drop  
(COMD)**



### Violations

U.C.	Dev.	Equip. 1	Equip. 2	Toward	Suggested Action	SEV.	NESC Reference
P000	PH	POLE	HYD		Relocate/Move	B	231A



**Fire Hydrant**  
**(HYD)**

**Pole**  
**(POLE)**

## Violations

U.C.	Dev.	Equip. 1	Equip. 2	Toward	Suggested Action	SEV.	NESC Reference
P000	PV	PDLP	COML		Raise Power	B	235C1

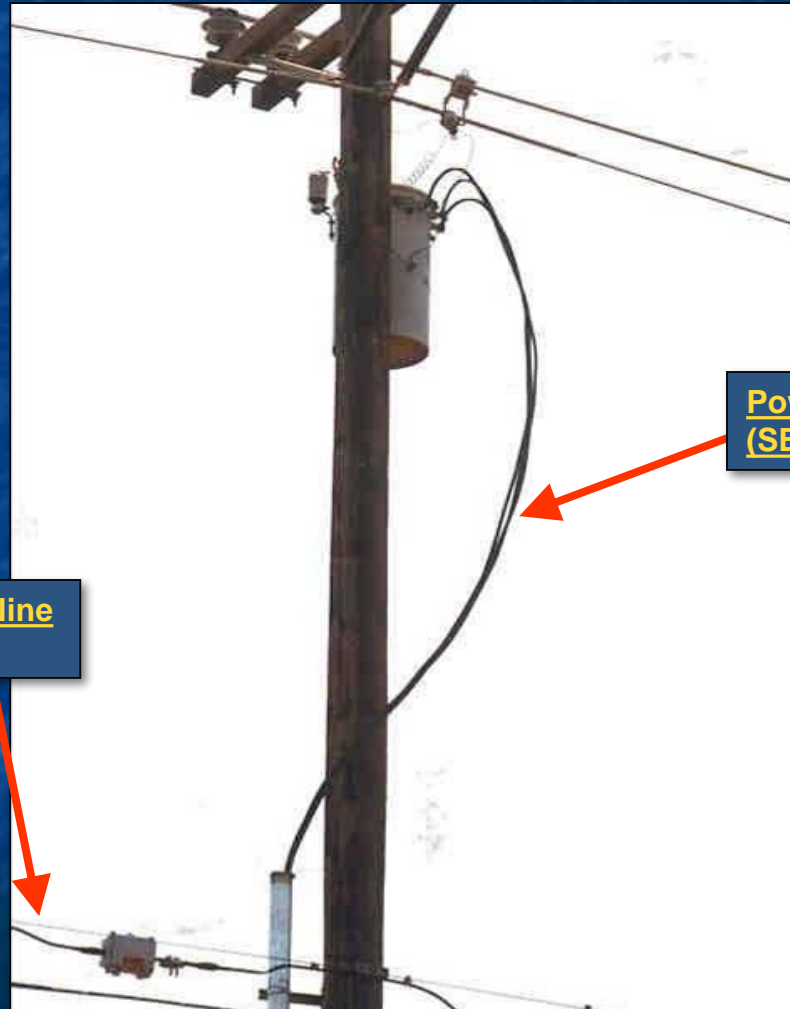
**Power Drip-loop  
(PDLP)**

**Communication Mainline  
(COML)**



## Violations

U.C.	Dev.	Equip. 1	Equip. 2	Toward	Suggested Action	SEV.	NESC Reference
P000	PV	SEC	COML		Place Split Duct	B	235C1
P000	PR	SEC			Attach	B	239A1

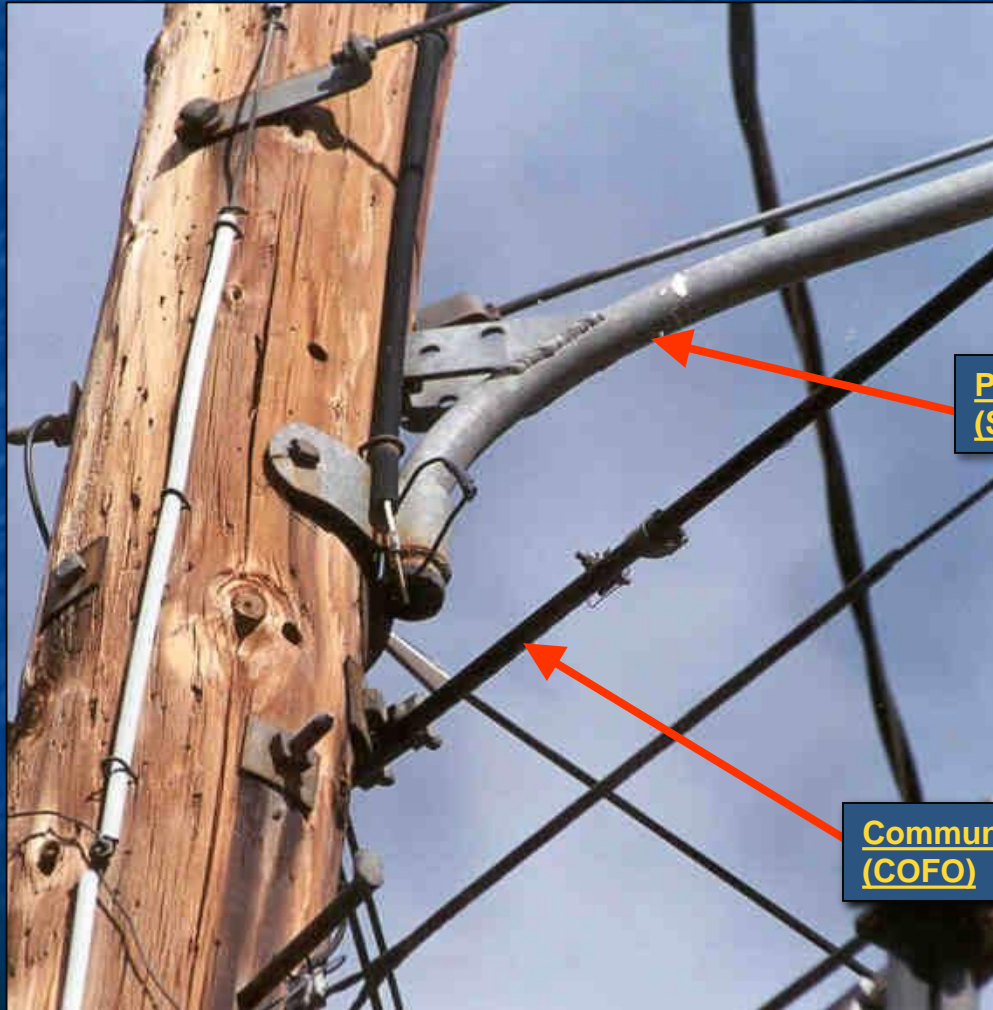


**Power Secondary  
(SEC)**

**Communication Mainline  
(COML)**

## Violations

U.C.	Dev.	Equip. 1	Equip. 2	Toward	Suggested Action	SEV.	NESC Reference
X000	PV	COFO	SLT		Lower Fiber	B	238D

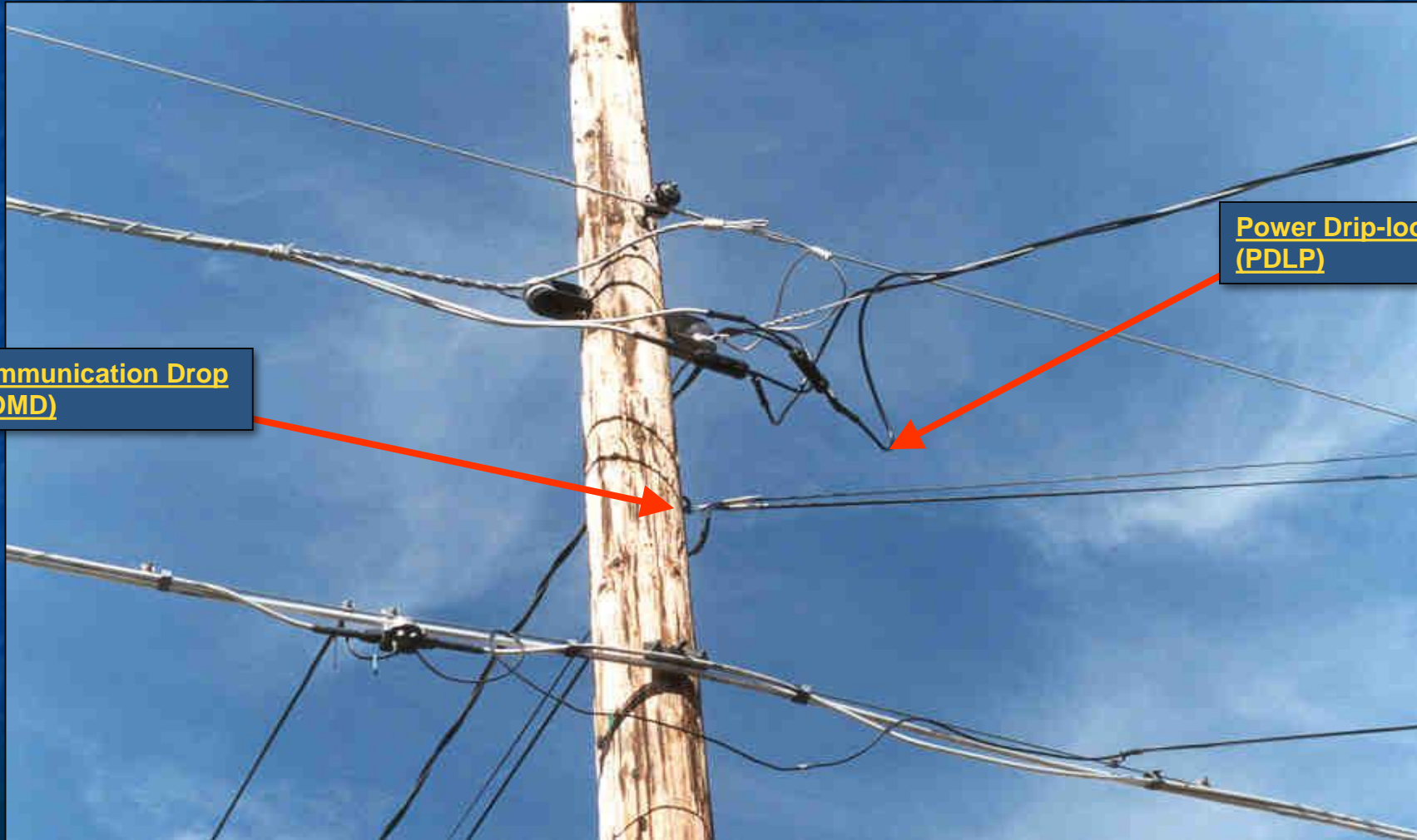


**Power Street Light  
(SLT)**

**Communication Fiber-optic  
(COFO)**

### Violations

U.C.	Dev.	Equip. 1	Equip. 2	Toward	Suggested Action	SEV.	NESC Reference
T000	PV	COMD	PDLP		Lower Telco	B	235-5



**Communication Drop  
(COMD)**

**Power Drip-loop  
(PDLP)**

### Violations

U.C.	Dev.	Equip. 1	Equip. 2	Toward	Suggested Action	SEV.	NESC Reference
T000	U	COMD	PEDS		Bury	B	230A2d



## Violations

U.C.	Dev.	Equip. 1	Equip. 2	Toward	Suggested Action	SEV.	NESC Reference
T000	MV	COMD	PEDS	B1234	Tighten	B	232

**Communication Drop  
(COMD)**



**Unusual Support  
(JOHN)**

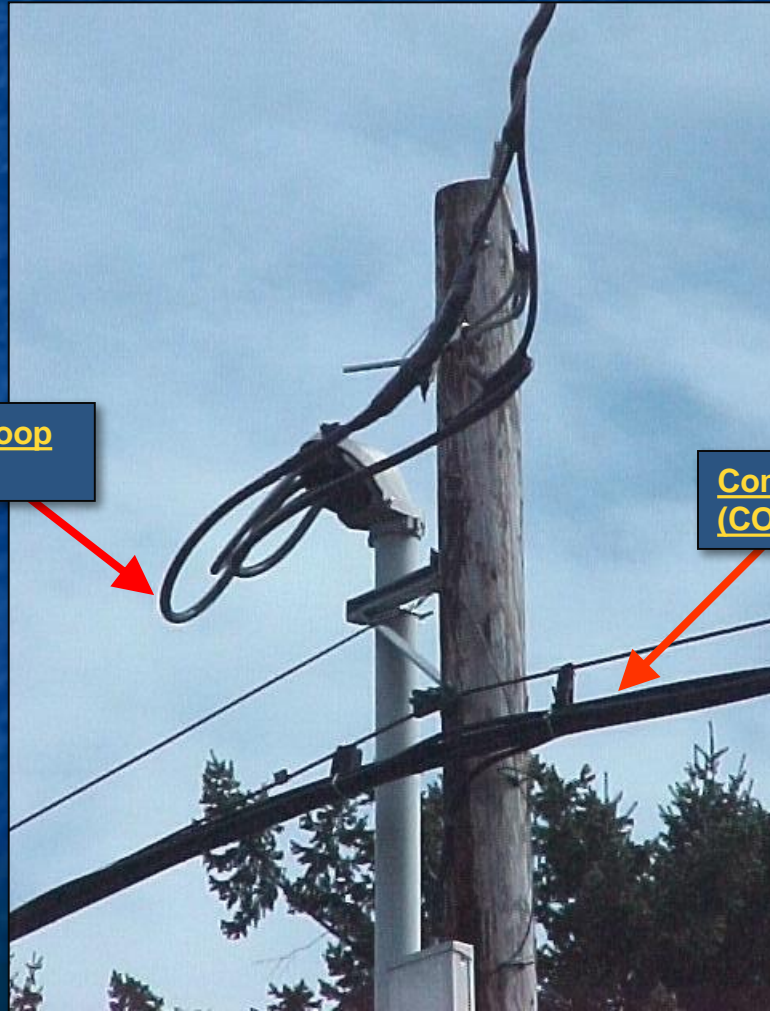
**Pedestrian Surface  
(PEDS)**

## Violations

U.C.	Dev.	Equip. 1	Equip. 2	Toward	Suggested Action	SEV.	NESC Reference
T000	PV	COML	PDLP		Lower Telco	B	235C1

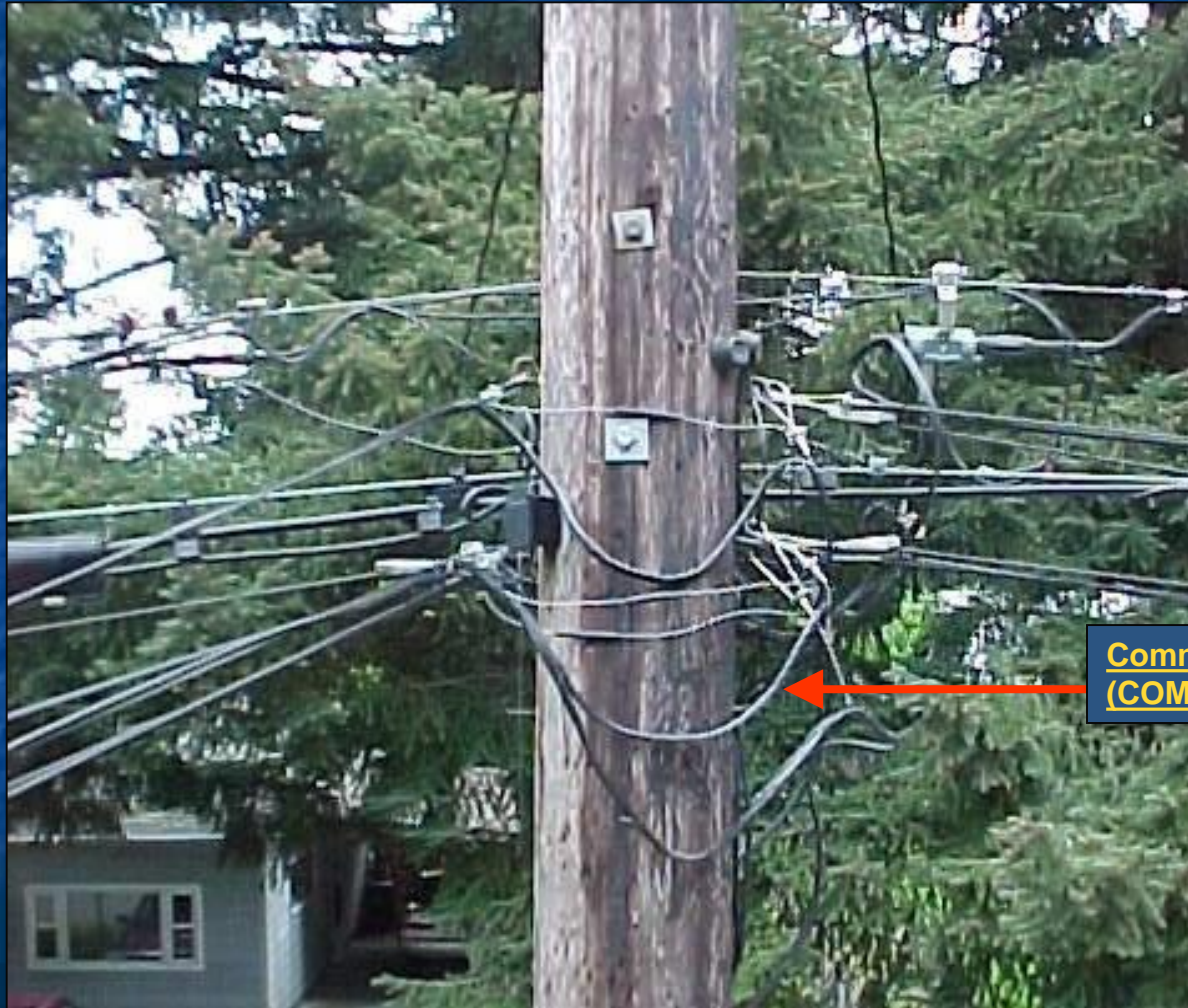
**Power Drip-loop  
(PDLP)**

**Communication Mainline  
(COML)**



## Violations

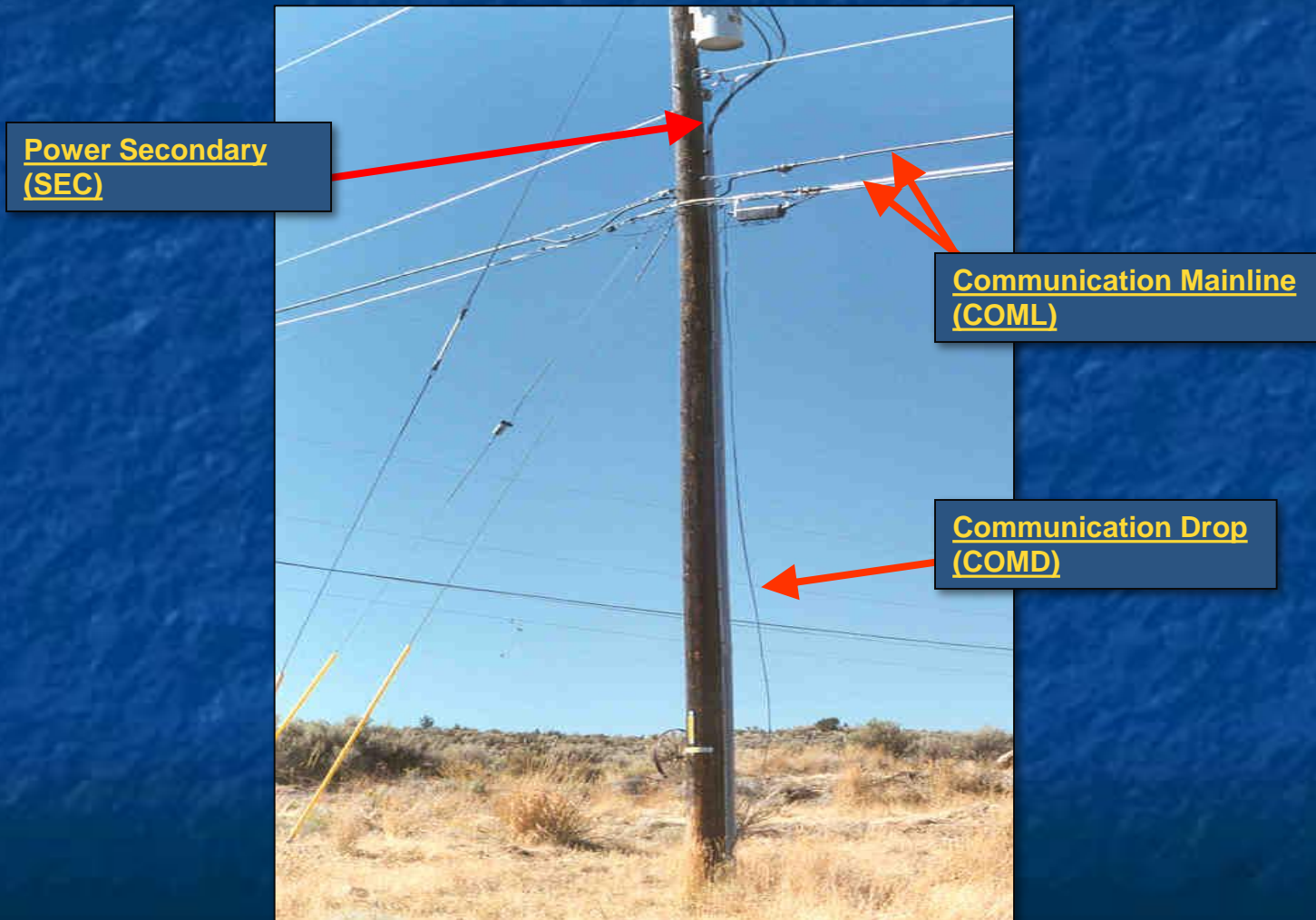
U.C.	Dev.	Equip. 1	Equip. 2	Toward	Suggested Action	SEV.	NESC Reference
T000	PC	COMD			Relocate/Move	B	236



**Communication Drop  
(COMD)**

### Violations

U.C.	Dev.	Equip. 1	Equip. 2	Toward	Suggested Action	SEV.	NESC Reference
T000	PR	COMD			Attach	B	239D3
P000	PV	SEC	COML		Place split Duct	B	235C1



**Power Secondary  
(SEC)**

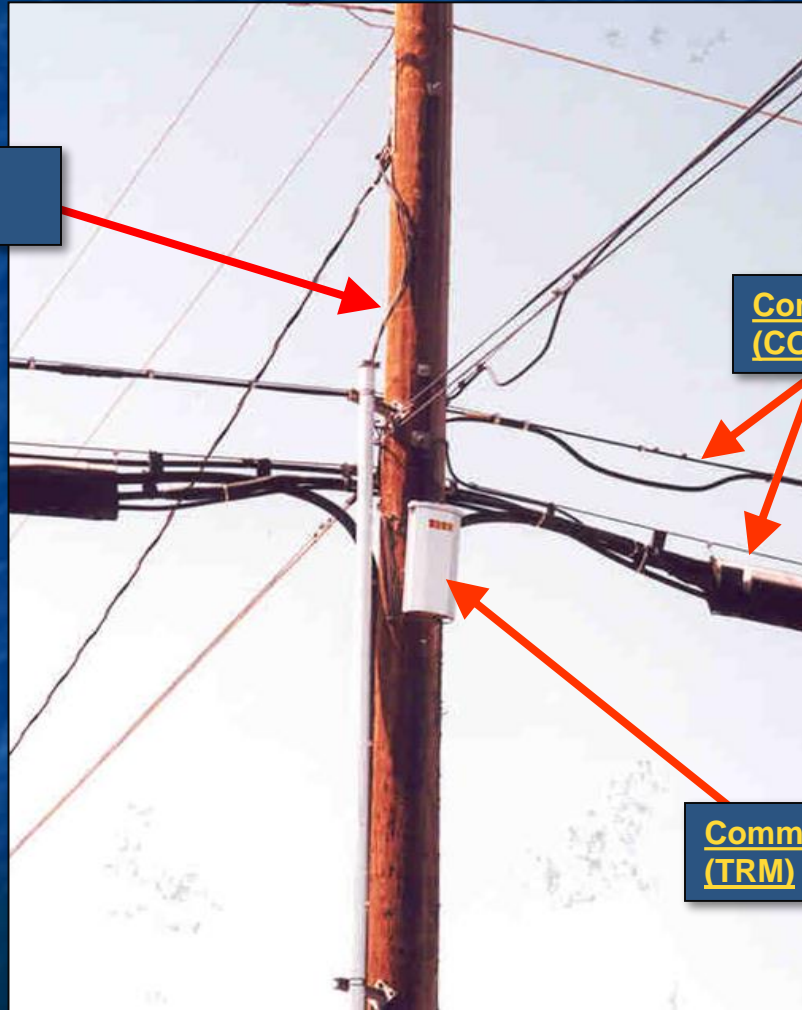
**Communication Mainline  
(COML)**

**Communication Drop  
(COMD)**

## Violations

U.C.	Dev.	Equip. 1	Equip. 2	Toward	Suggested Action	SEV.	NESC Reference
T000	PC	TRM			Relocate/Move	B	236
P000	PV	SEC	COML		Place Split Duct	B	235C1

Power Secondary (SEC)



Communication Mainline (COML)

Communication Terminal (TRM)

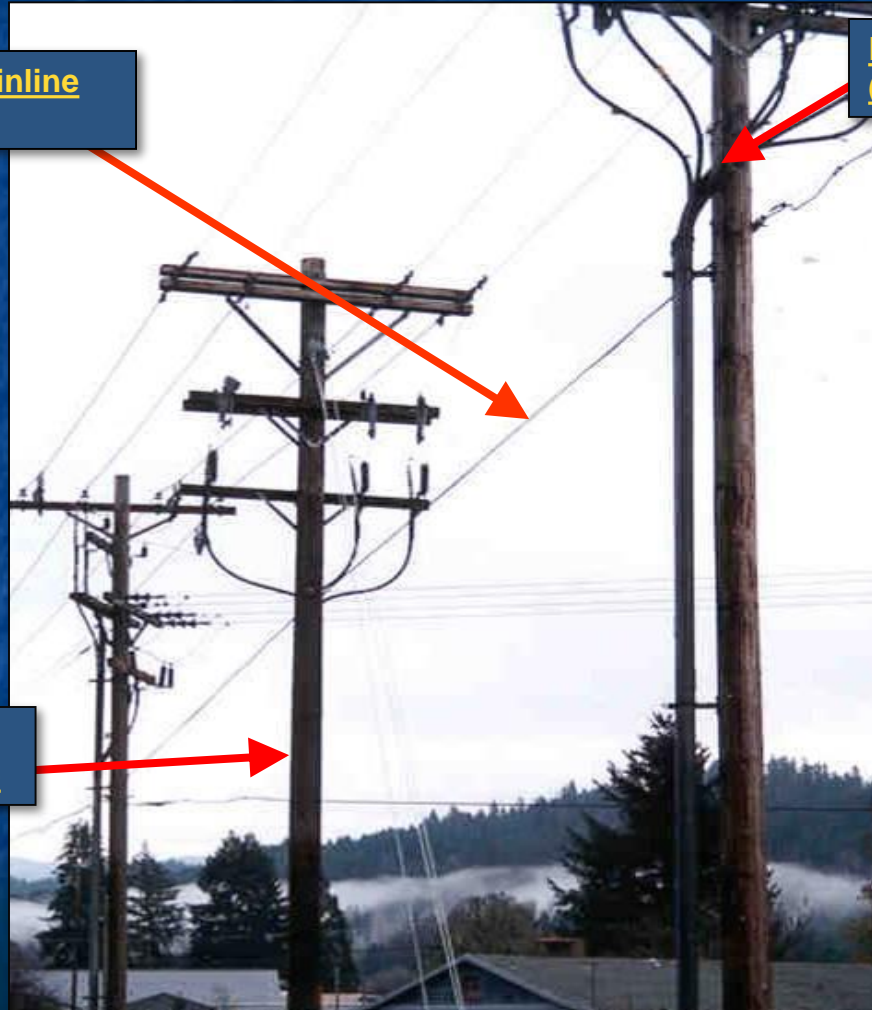
### Violations

U.C.	Dev.	Equip. 1	Equip. 2	Toward	Suggested Action	SEV.	NESC Reference
X000	PV	COML	SEC		Lower	B	235C1
X000	PH	COML	POLE		Attach	B	234B1

Communication Mainline  
(COML)

Power Secondary  
(SEC)

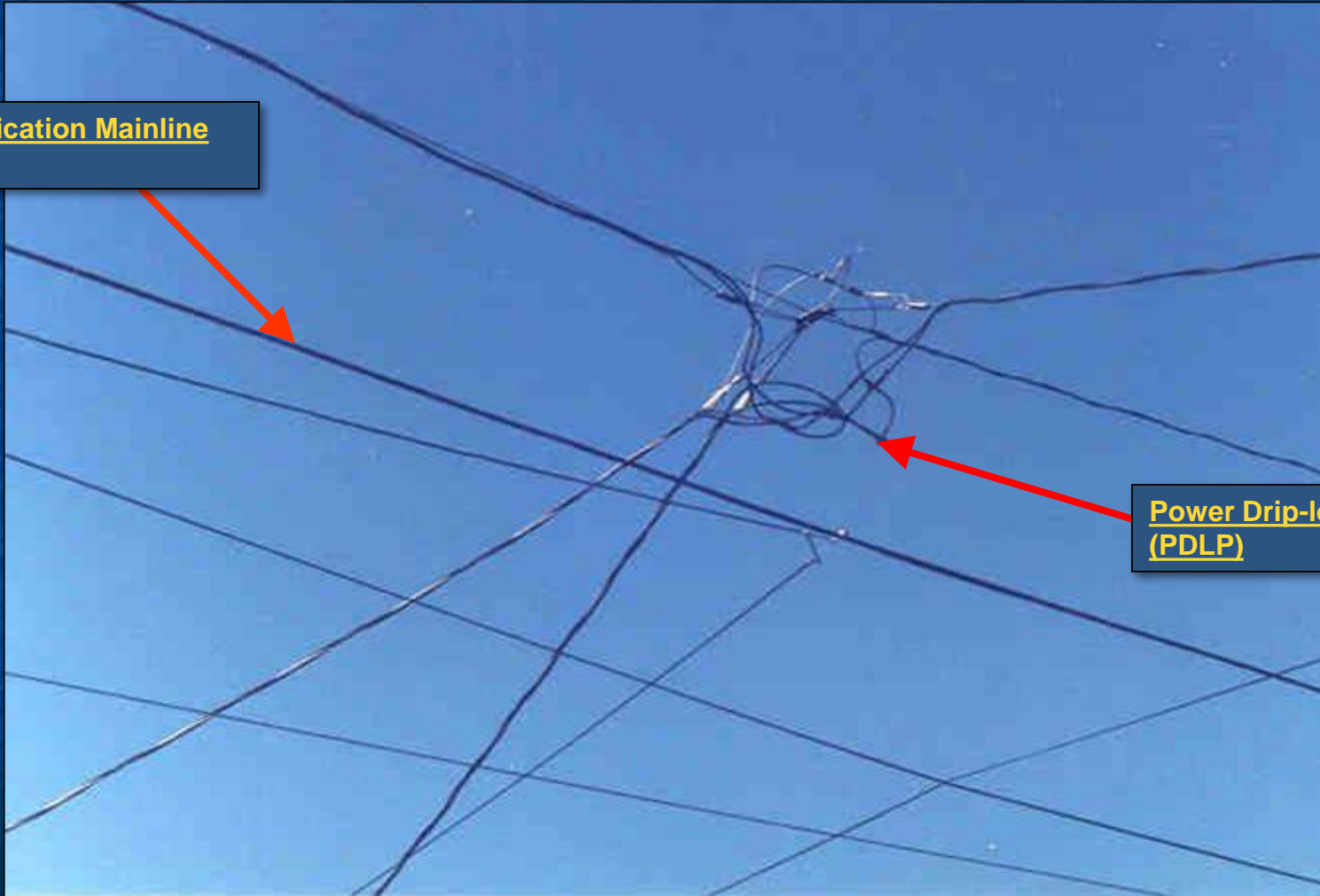
Pole  
(POLE)



### Violations

U.C.	Dev.	Equip. 1	Equip. 2	Toward	Suggested Action	SEV.	NESC Reference
P000	MV	PDLP	COML	P4321	Shorten	B	235C2b(1)(a)

**Communication Mainline  
(COML)**



**Power Drip-loop  
(PDLP)**

## Violations

U.C.	Dev.	Equip. 1	Equip. 2	Toward	Suggested Action	SEV.	NESC Reference
C000	MV	COMD	SEC	P4321	Raise Power	B	235C2b(1)(a)
T000	MV	COMD	SEC	P4321	Raise Power	B	235C2b(1)(a)

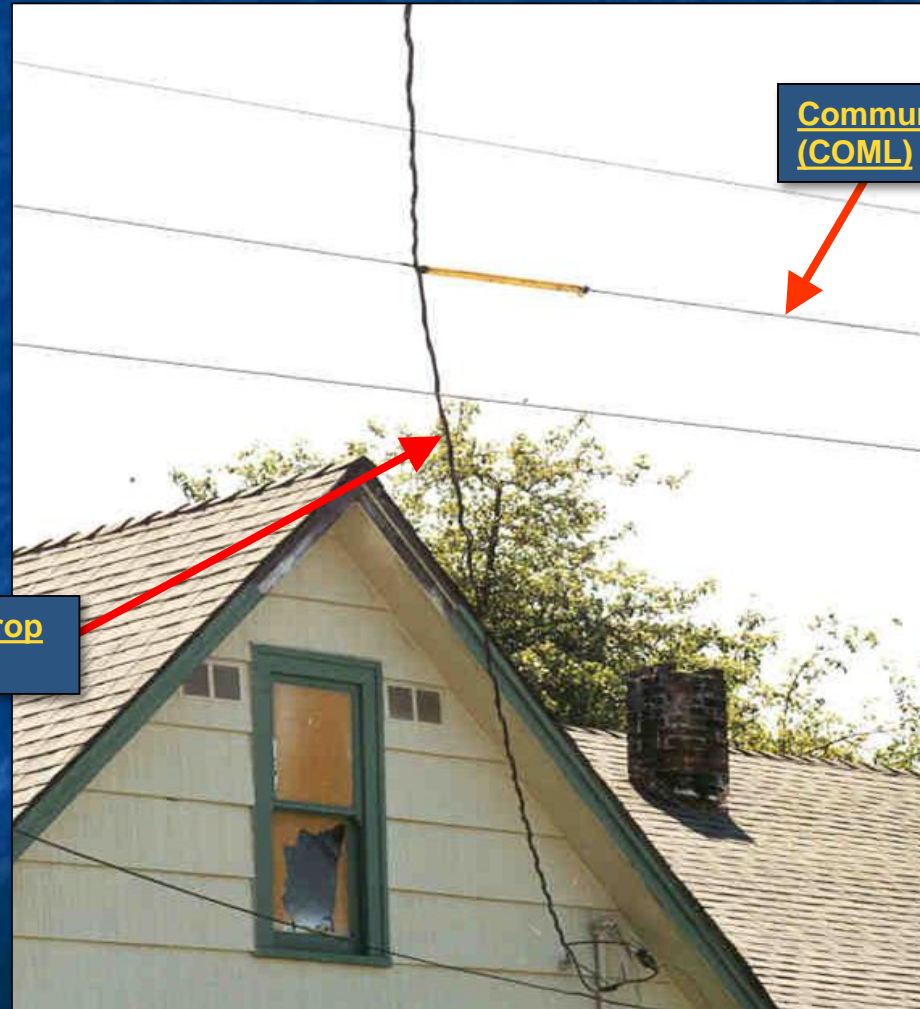
**Power Secondary  
(SEC)**



**Communication Drop  
(COMD)**

### Violations

U.C.	Dev.	Equip. 1	Equip. 2	Toward	Suggested Action	SEV.	NESC Reference
P000	MV	PDRP	COML	B1234	Raise Power	B	233C1

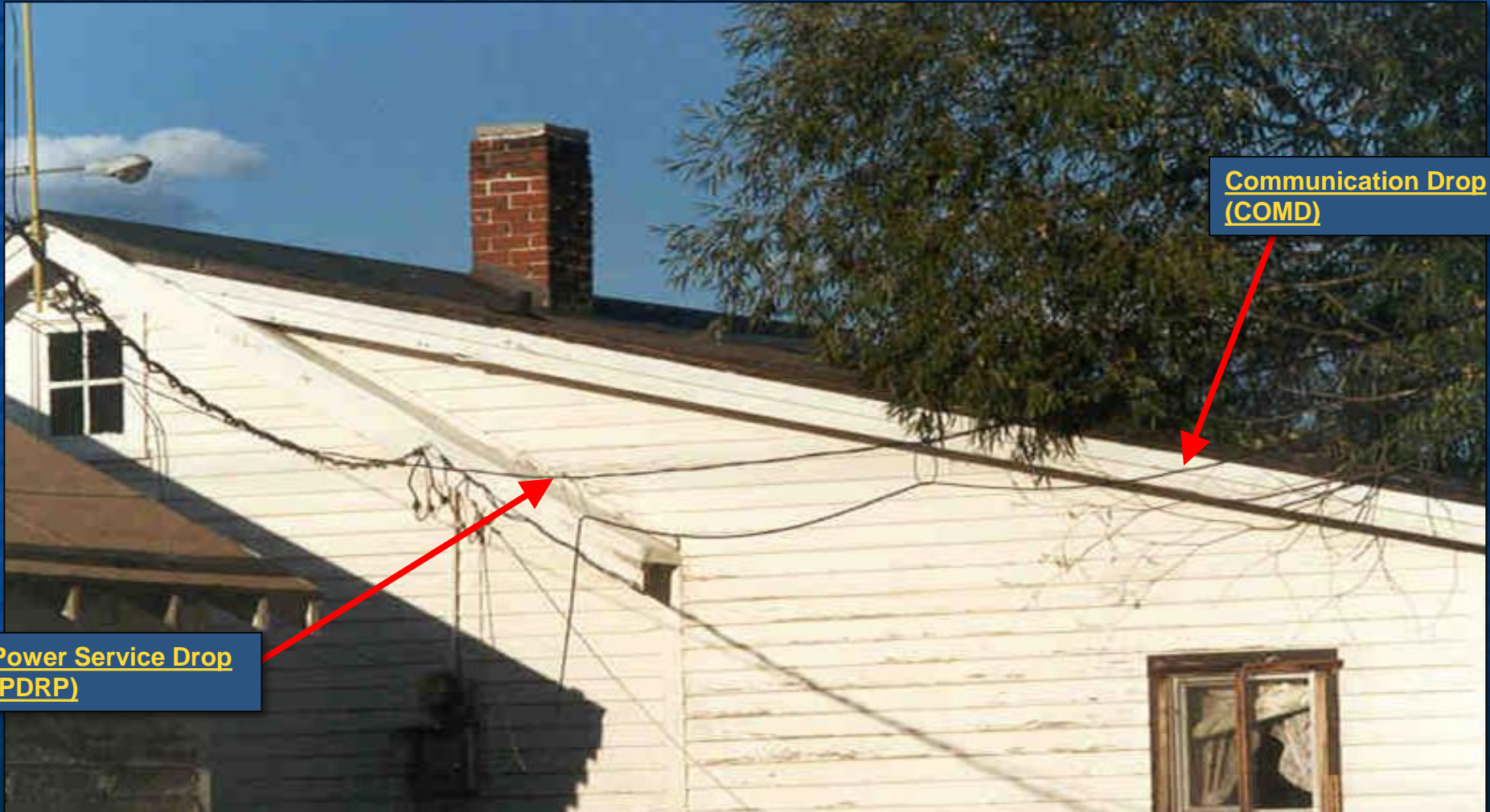


**Power Service Drop  
(PDRP)**

**Communication Mainline  
(COML)**

### Violations

U.C.	Dev.	Equip. 1	Equip. 2	Toward	Suggested Action	SEV.	NESC Reference
X000	MV	COMD	PDRP	B1234	Move 1st attachment	B	235C1



**Power Service Drop  
(PDRP)**

**Communication Drop  
(COMD)**

## Violations

U.C.	Dev.	Equip. 1	Equip. 2	Toward	Suggested Action	SEV.	NESC Reference
T000	MV	COMD	DRSR	B1234	Raise Telco	B	232

Drivable Surface  
(DRSR)



Communication Drop  
(COMD)

### Violations

U.C.	Dev.	Equip. 1	Equip. 2	Toward	Suggested Action	SEV.	NESC Reference
P000	MV	SEC	ROOF	P4321	Raise Power	B	234C

Power Secondary  
(SEC)



Roof  
(ROOF)

## Violations

U.C.	Dev.	Equip. 1	Equip. 2	Toward	Suggested Action	SEV.	NESC Reference
P000	BV	PDRP	PEDS	B1234	Raise Power	B	234C3d(1)



**Power Service Drop  
(PDRP)**

**Pedestrian Surface  
(PEDS)**

## Violations

U.C.	Dev.	Equip. 1	Equip. 2	Toward	Suggested Action	SEV.	NESC Reference
P000	BV	PDLP	ROOF	B1234	Shorten	B	234C3d(1)

Power Drip-loop  
(PDLP)



Roof  
(ROOF)

## Violations

U.C.	Dev.	Equip. 1	Equip. 2	Toward	Suggested Action	SEV.	NESC Reference
T000	AB	COMD			Remove	B	214B



**Communication Drop  
(COMD)**

## Violations

U.C.	Dev.	Equip. 1	Equip. 2	Toward	Suggested Action	SEV.	NESC Reference
C000	BV	COMD	PDLP	B1234	Relocate/Move	B	NEC

Communication Drop  
(COMD)



Power Drip-loop  
(PDLP)

### Violations

U.C.	Dev.	Equip. 1	Equip. 2	Toward	Suggested Action	SEV.	NESC Reference
P000	BH	PDRP	WIN	B1234	Relocate/Move	B	234C3d(2)



Window  
(WIN)

Power Service Drop  
(PDRP)

Violations							
U.C.	Dev.	Equip. 1	Equip. 2	Toward	Suggested Action	SEV.	NESC Reference
P000	PC	TREE			Trim	B	217A4



Trees/Vegetation  
(TREE)



## Violations

U.C.	Dev.	Equip. 1	Equip. 2	Toward	Suggested Action	SEV.	NESC Reference
P000	AB	XARM			Remove	B	214B
P000	AB	PBRK			Remove	B	214B



## Violations

U.C.	Dev.	Equip. 1	Equip. 2	Toward	Suggested Action	SEV.	NESC Reference
T000	PH	Pole	Pole		Transfer	B	OPUC Joint Use Policy
C000	PH	Pole	Pole		Transfer	B	OPUC Joint Use Policy



**Pole  
(POLE)**